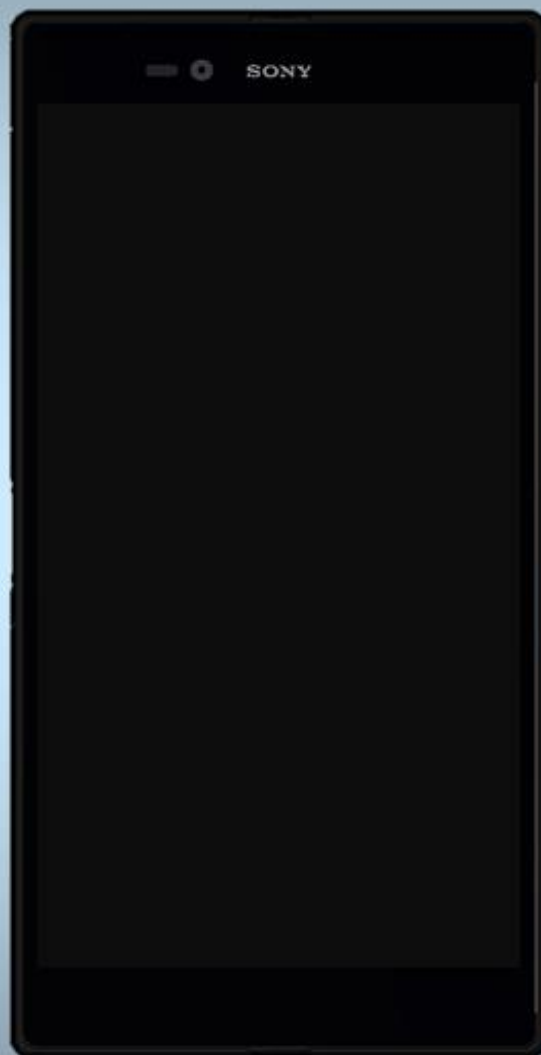


Component Replacement

- electrical -



Xperia™ Z Ultra

C6802 / C6806 / C6833 / C6843 / XL39h

CONTENTS

1 Replaceable Components 3

2 Component Placing..... 5

3 Additional Repair info 6

4 Revision History 11

For general information about electrical repair related issues, refer to 1220-1336: Generic Repair Manual - electrical

Test after electrical replacement: refer to 1273-1772 Mechanical Test Instruction

Do not remove shield can lids (Heat pasta are added and RF performance will be damaged)

1 Replaceable Components

EXPLANATION OF ABBREVIATIONS USED IN THE COLUMN 'COMMENTS' BELOW

COMPONENT LOCATION

P = Primary side

S = Secondary side

REPAIR METHOD

HA = Hot Air (removal & mounting)

ST = Soldering Tool (removal & mounting)

HA/ST = Hot Air for removal - Soldering Tool for mounting

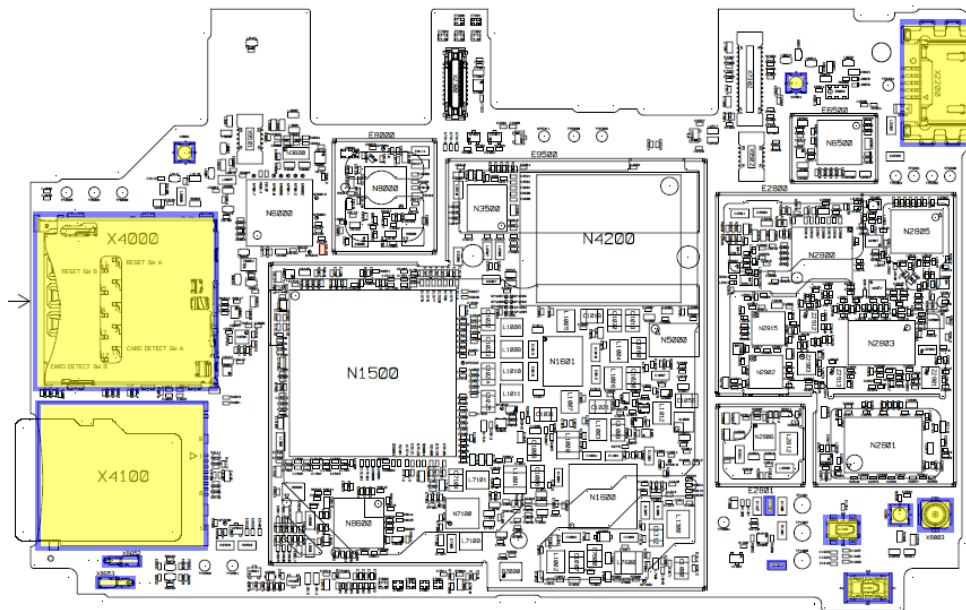
BGA = BGA Station

BH = Bottom Heater

ADDITIONAL INFORMATION

⇒1 (2,3,4, etc.) = Proceed to 'Additional Repair Info' for further instructions in the indicated section(s).

Position	Component	Part no.	Comments
B3504	Mic 3.76 Silicon LT25	1264-2635	S HA+BH or BGA ⇨16
C8128	Capacitor Ceramic 10.0 uF 6.3 V K0402	1257-4059	P HA+BH ⇨1
L1301	Filter 220ohm 0603 2A 0.05ohm Bead	1001-1896	P HA+BH ⇨2
R1304	Resistor 0.01 Ohm +/-1% 200.0 mW (1.6x0.8x0.	1238-2147	P HA+BH ⇨3
X1300	Conn BtB Plug 4p HIROSE/BM22	1264-8491	P HA+BH ⇨4
X1301	Conn BtB Receptacle 4p HIROSE/BM22	1264-6156	P HA+BH ⇨5
X2200	Conn USB B Receptacle 5p	1270-2769	P HA+BH or BGA ⇨6
X2801	Conn Coax Receptacle 1p	1237-5326	P HA+BH ⇨7
X2804	Conn Coax Receptacle 1p	1237-5326	P HA+BH ⇨8
X4000	Card Conn SIM	1271-9742	P HA+BH or BGA⇨9
X4100	Card Conn Micro SD	1254-2021	P HA+BH or BGA ⇨10
X8000	Conn Leaf Spring Plug 1p , working heigh	1261-8573	S HA+BH ⇨11
X8001	Conn Coax Receptacle 1p	1237-5326	P HA+BH ⇨12
X8002	Conn Leaf Spring Plug 1p , working heigh	1261-8573	S HA+BH ⇨11
X8003	Conn Coax Receptacle 1p	1266-1778	P HA+BH ⇨13
X8401	Conn Leaf Spring Plug 1p , working heigh	1261-8573	S HA+BH ⇨14
X8652	Conn Leaf Spring Plug 1p Antenna/GND Spr	1239-2123	P HA+BH ⇨15
X8653	Conn Leaf Spring Plug 1p Antenna/GND Spr	1239-2123	P HA+BH ⇨15



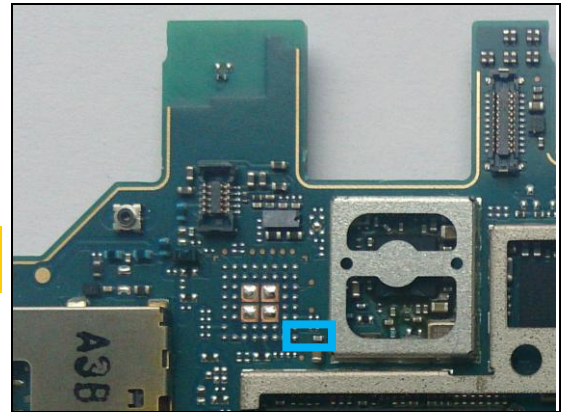
5(12)

3 Additional Repair info

1

C8128

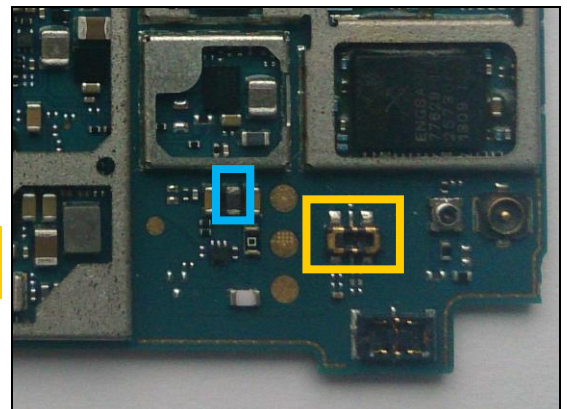
Replace if short circuit (WLAN problems or high power consumption when WLAN are selected)



2

L1301

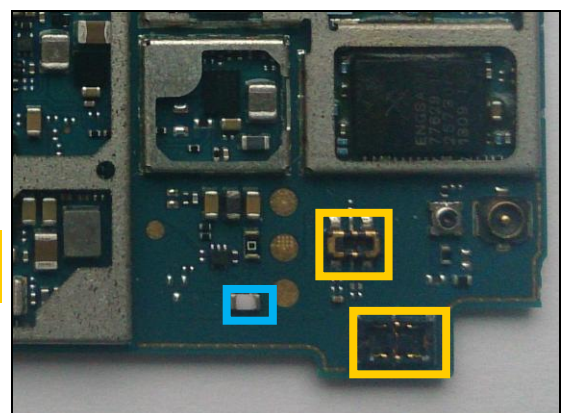
***Replace if open circuit (Magnet charger not working)
Protect the BtB connector with capton tape!***



3

R1304

***Replace if open circuit (Phone dead)
Protect the BtB connectors with capton tape!***



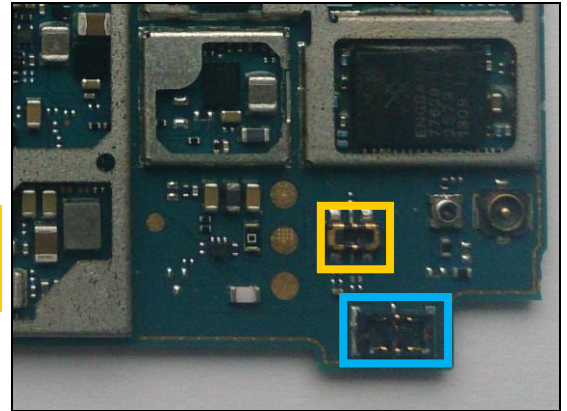
Repair Actions: Additional Repair Info

4

X1300

Replace if mechanical damaged. (Phone dead or power off)

Protect the BtB connector with capton tape!

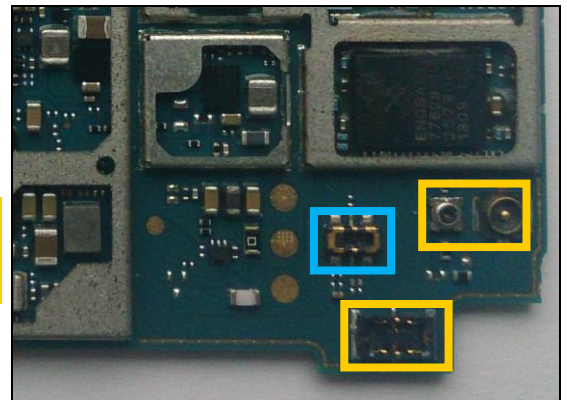


5

X1301

Replace if mechanical damaged. (Magnet charger not working)

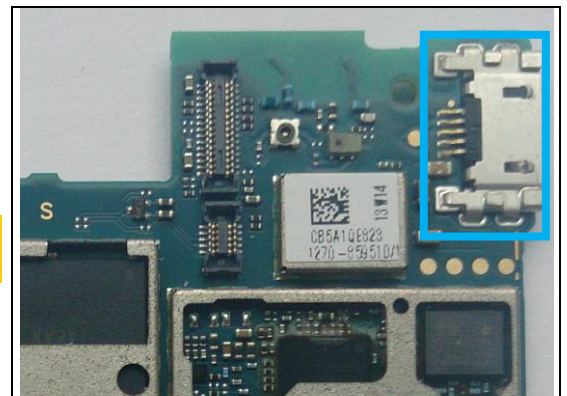
Protect the BtB and Coax connectors with capton tape!



6

X2200

Replace if mechanical damaged (USB charger or data transfer not working)

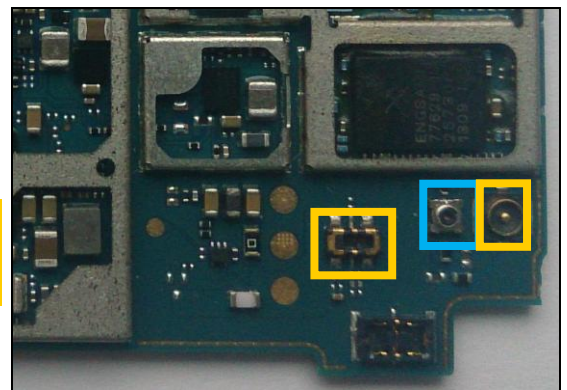


7

X2801

Replace if open circuit 1-2 (No or bad network, main antenna)

Protect the BtB and Coax connectors with capton tape!



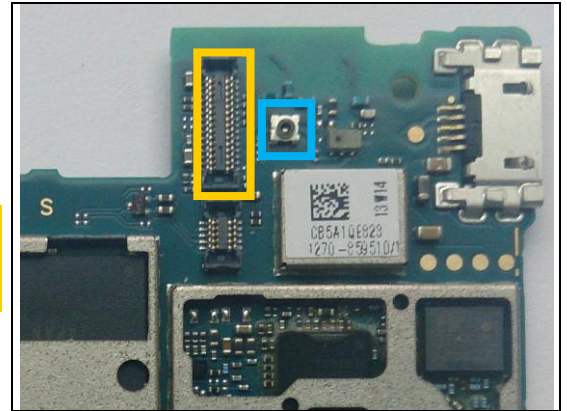
Repair Actions: Additional Repair Info

8

X2804

Replace if open circuit 1-2 (Bad network, secondary antenna)

Protect the BtB connector with capton tape!

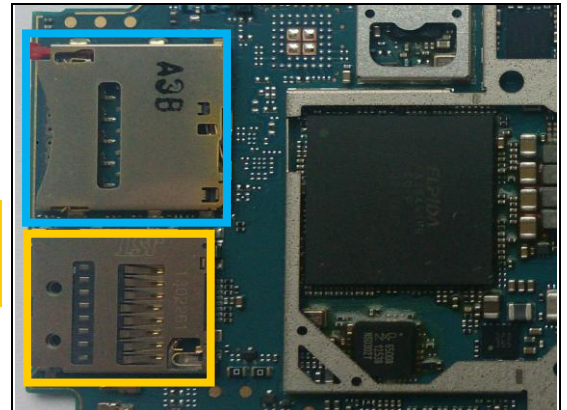


9

X4000

Replace if mechanical damaged (No network, restart, No SIM card inserted)

Protect the SD connector with capton tape!

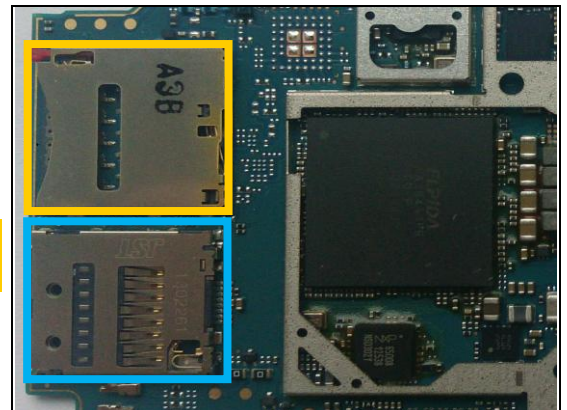


10

X4100

Replace if mechanical damaged (No SD card inserted)

Protect the SIM connector with capton tape!

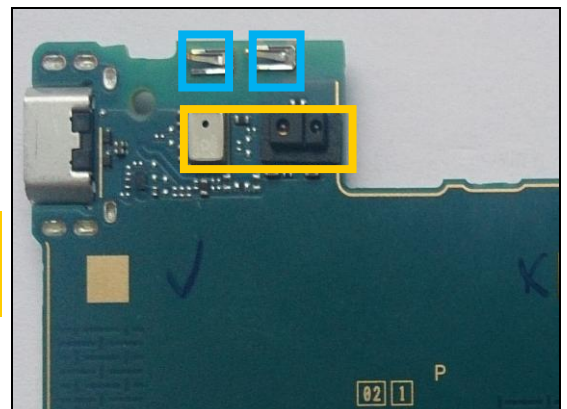


11

X8000, X8002

Replace if mechanical damaged (Bad network, secondary antenna)

Protect the Mic and Sensor with capton tape!

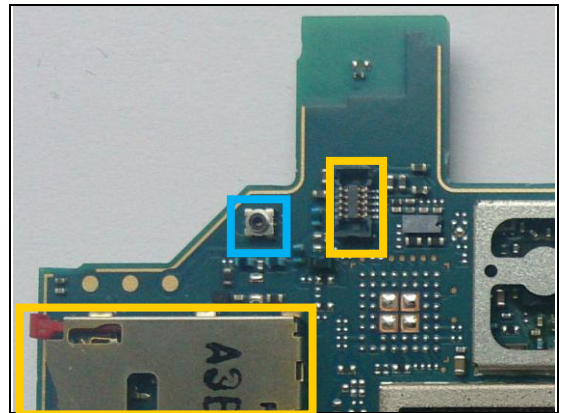


Repair Actions: Additional Repair Info

12

X8001

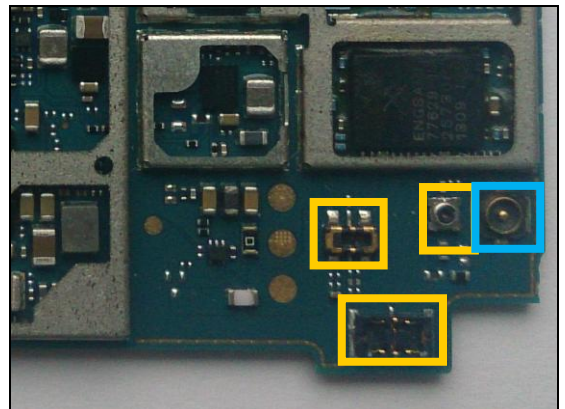
*Replace if open circuit 1-2 (no or bad WLAN/ BT/ GPS)
Protect the SIM and BtB connectors with capton tape!*



13

X8003

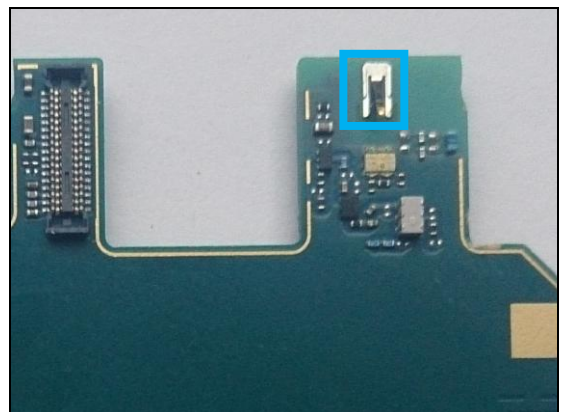
*Replace if mechanical damaged (No or bad network,
main antenna)
Protect the BtB and Coax connectors with capton tape!*



14

X8401

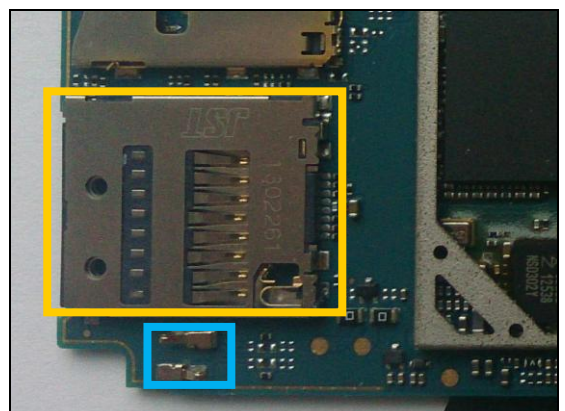
*Replace if mechanical damaged (no or bad WLAN/ BT/
GPS)*



15

X8652, X8653

*Replace if mechanical damaged (no or bad NFC)
Protect the SDconnector with capton tape!*



Repair Actions: Additional Repair Info

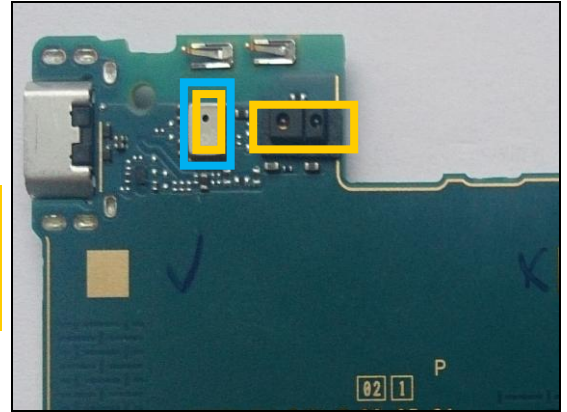
16

B3504

Replace if no audio from secondary mic

Protect the LED with capton tape!

When replacing protect secondary mic with capton tape!



4 Revision History

Rev.	Date	Changes / Comments
1	2014-04-15	Initial release
2	2014-07-11	B3504 added

